

Centurion Interiors
Partition Systems

Demountable Partitions
Glass Partitions
Acoustic Glass Doors
Timber Doors
Bespoke Solutions



Installation Guide

Acoustic Glass Door (O/P)



Tape Measure



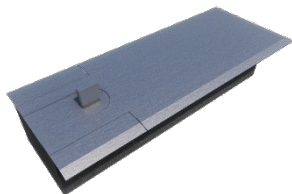
Toolbox



Drill



Laser Level



Start off by installing your (third party) floor box as per the pin position requirements shown on the following drawings found by scanning the relevant QR code:



PD_CA_1016
Aluminium SGD



PD_CA_1017
Aluminium DGD

STEP 1

Loosely position the top pivot plate and spacer together by using the mechanical fixings provided.

Once the two are loosely connected, offer the pivot plate and spacer onto the pivot block that is fixed at the top of the door.



Carefully place the door leaf onto the floor box and angle the door leaf into place ensuring the door becomes flush with the frame.

STEP 2

STEP 3

Once in position, mechanically fix the top pivot plate into the door frame head using the mechanical fixings provided.

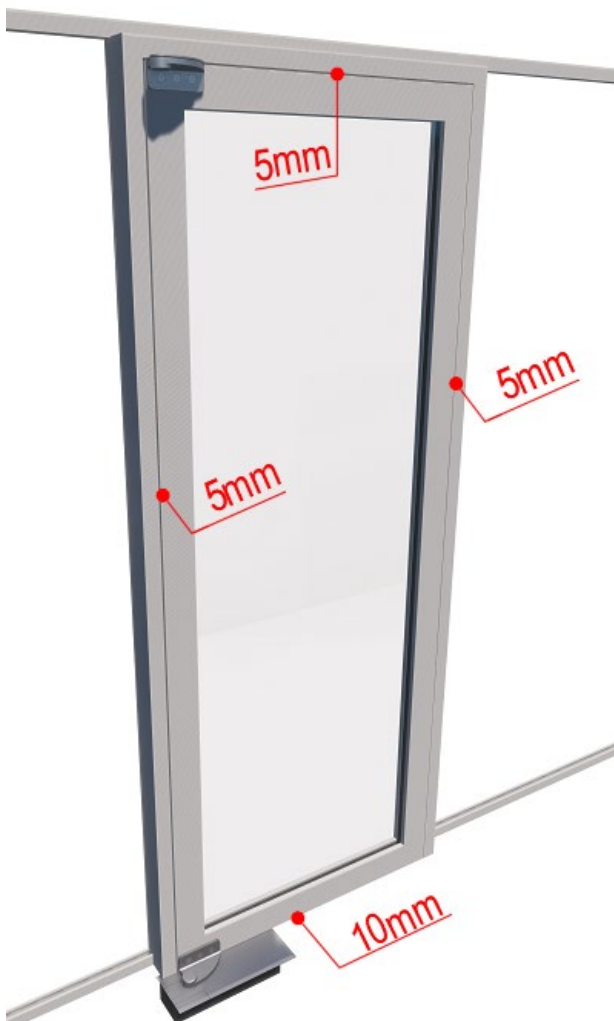
Note: When installing into System 9000 door frames please see below.

9000 SG Frames:

Use most outer 4 pre-drilled holes in frame.

9000 DG Frames:

Use most inner 4 pre-drilled holes in frame.



Ensure clearance gaps between the door edges and frame are correct.

*Sizes shown are relative for the below door types on offset pivots:
Aluminium Single Glazed Door Leaf
Aluminium Double Glazed Door Leaf

Open and close the door to test for normal operation.

STEP 4

STEP 5

Fit the remaining ironmongery and door furniture to the door, open and close the door to check normal operation and adjust as necessary.



The position of the door module is established from the partitioning layouts and the floor track should be omitted for the width of the door module where necessary.

Please refer to the system specific installation guide for a complete breakdown of door frame installation by scanning the relevant QR code below.



System 3000
Installation Guide



System 4000
Installation Guide



System 9000 SG
Installation Guide



System 9000 DG
Installation Guide



If you have any questions regarding this installation guide or require further assistance, please contact Truline Systems technical team.

Contact Us:



Birmingham

NDI, Meridian Way
Core 42 Logistics Park
Watling Street
Tamworth
B78 1TX

T: 01213 522 460
E: birmingham@ndi.co.uk

London

NDI, Unit 18, IO Centre
Kimpton Park Way
Sutton
SM3 9BW

T: 020 8254 2380
E: london@ndi.co.uk

Maidstone

NDI, Loc8,
Unit 12
Maidstone
ME17 1XG

T: 01622 790 622
E: maidstone@ndi.co.uk

Milton Keynes

NDI, Unit 2, Bilton Road
Denby East
Bletchley
MK1 1HW

T: 01908 640 634
E: milton.keynes@ndi.co.uk

Newport

NDI, Unit 4
Tregwilym Road
Rogerstone
Newport
NP10 9DQ

T: 01633 898 340
E: newport@ndi.co.uk

Newton-Le-Willows

NDI, Unit 7
Anglezarke Road
Newton Le Willows
WA12 8DJ

T: 01925 220 827
E: newtonsales@ndi.co.uk

Poole

NDI, Albany House
Elliot Road
Poole
BH11 8JH

T: 01202 576 006
E: poole@ndi.co.uk

ndi.co.uk

Disclaimer

IT IS IMPORTANT THAT YOU READ AND UNDERSTAND THIS STATEMENT BEFORE MAKING USE OF THIS DOCUMENT.

This document is published by Truline Systems. The information contained within this publication is for general information purposes only. The publication has not been prepared to meet the individual requirements of any particular construction project and it is your responsibility to ensure that the construction materials, techniques and processes are suitable for that particular use.

The information contained within this publication is not intended to amount to, nor should it be relied upon as, formal advice or guidance (including from any qualified professional).

The information provided is only to be used and acted on by, or under the supervision of suitably qualified individuals and is correct at the time of going to press. However Truline Systems reserves the right to amend specifications without prior notification in accordance with our policy of continuous development.

The information in this publication is not to be used as a substitute for obtaining suitable independent, professional, qualified and/or specialist advice. If you are not a suitably qualified professional, you must obtain your own independent, specialist advice from a relevant qualified professional for any construction project.

Truline Systems shall not be liable for any loss of profit, revenue, business, contract, opportunity, goodwill, reputation, or any indirect, special or consequential loss arising out of, or in connection with, this publication.

If you have any queries, please contact technical@trulinesystems.co.uk