

Centurion Interiors
Partition Systems

Demountable Partitions
Glass Partitions
Acoustic Glass Doors
Timber Doors
Bespoke Solutions



Installation Guide

Timber Doors and Frames (FR)



Tape Measure



Toolbox



Drill



Laser Level

This install guide solely focuses on fire rated components. Please read in conjunction with the typical Timber Doors & Frames install guide by scanning QR code



INTUMESCENT CONFIG OPTIONS



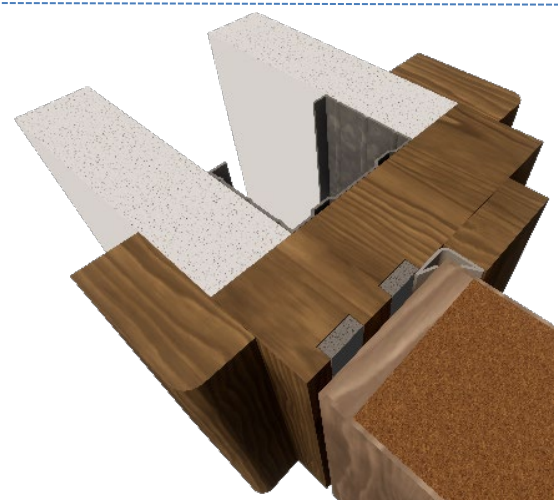
Standard offering

FD30T (PIF) – Up to 3315 x 915mm (15 x 4mm int. (x1))

FD60T (PIF) – Up to 3066 x 928mm (15 x 4mm int. (x2))

or

– Up to 2742 x 1046mm (15 x 4mm int. (x2))



Available on request

FD30T (PIF) – Up to 3315 x 915mm
(10 x 4mm int. (x2))



Standard offering

FD30TS (PIF) – Up to 3315 x 915mm (15 x 4mm int. (x1))

FD60TS (PIF) – Up to 3066 x 928mm (15 x 4mm int. (x2))

or

– Up to 2742 x 1046mm (15 x 4mm int. (x2))



Available on request

FD30T (PIF) – Up to 3315 x 915mm
(10 x 4mm int. (x2))



Standard offering

FD30TI (PID) – Up to 3315 x 915mm (15 x 4mm int. (x1))

FD60TI (PID) – Up to 3066 x 928mm (15 x 4mm int. (x2))

or

– Up to 2742 x 1046mm (15 x 4mm int. (x2))



Available on request

FD30TI (PID) – Up to 3315 x 915mm

(10 x 4mm int. (x2))



Standard offering

FD30TIS (PID) – Up to 3315 x 915mm (15 x 4mm int. (x1))

FD60TIS (PID) – Up to 3066 x 928mm (15 x 4mm int. (x2))

or

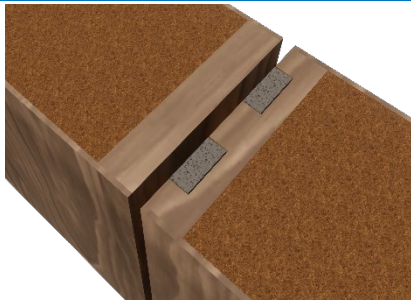
– Up to 2742 x 1046mm (15 x 4mm int. (x2))



Available on request

FD30TIS (PID) – Up to 3315 x 915mm

(10 x 4mm int. (x2))



30 minute configurations:

10x4mm intumescent (x2) into one of the timber door long edges at meeting stiles

60 minute configurations:

15x4mm intumescent (x2) into one of the timber door long edges at meeting stiles

NOTE 1

NOTE 2

The supporting construction may be timber or steel stud plasterboard partition, blockwork, brickwork or concrete walls, but shall be of a type that has been tested or assessed to provide in excess of 30 minutes fire resistance, at the required size, when incorporating door openings.



Fire stopping between the supporting construction and timber frames should follow the recommendations of tables 2 & 3 in BS8214: 2016, test data, assessments, or third party certificated solutions may also be utilised using a product proven in such timber applications.

Please scan the below QR code to the left for tables referenced.

NOTE 3

NOTE 4

The clearance gaps required for the scenarios listed below should be no less than 1.5mm and no greater than 4mm.

For Truline setting out information, please scan QR code.



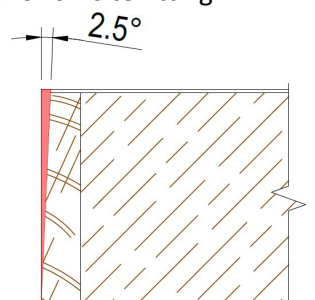
Under no circumstances should the IFC Fire label be removed or cut off the top of the door. Trimming of the bottom of the door is permitted in line with the minimum gap requirements.

NOTE 5

SUMMARY

To maintain Truline approval, an installed fire rated door set must satisfy the following requirements:

- Timber lipping's may be adjusted by a maximum of 3mm post-manufacture for on-site fitting purposes, providing a minimum thickness of 6mm of lipping is maintained
- A chamfer can be applied to the leading edge of the door, but the chamfer must not exceed 2.5mm (example shown on right hand side)
- The door leaf must finish flush from the face of the frame lining (before the application of architrave).
- All remaining ironmongery can be fitted once door and frame are fully assembled/installed.



Contact Us:



Birmingham

NDI, Meridian Way
Core 42 Logistics Park
Watling Street
Tamworth
B78 1TX

T: 01213 522 460
E: birmingham@ndi.co.uk

Newport

NDI, Unit 4
Tregwilym Road
Rogerstone
Newport
NP10 9DQ

T: 01633 898 340
E: newport@ndi.co.uk

London

NDI, Unit 18, IO Centre
Kimpton Park Way
Sutton
SM3 9BW

T: 020 8254 2380
E: london@ndi.co.uk

Newton-Le-Willows

NDI, Unit 7
Anglezarke Road
Newton Le Willows
WA12 8DJ

T: 01925 220 827
E: newtonsales@ndi.co.uk

Maidstone

NDI, Loc8,
Unit 12
Maidstone
ME17 1XG

T: 01622 790 622
E: maidstone@ndi.co.uk

Poole

NDI, Albany House
Elliot Road
Poole
BH11 8JH

T: 01202 576 006
E: poole@ndi.co.uk

Milton Keynes

NDI, Unit 2, Bilton Road
Denby East
Bletchley
MK1 1HW

T: 01908 640 634
E: milton.keynes@ndi.co.uk

ndi.co.uk

Disclaimer

IT IS IMPORTANT THAT YOU READ AND UNDERSTAND THIS STATEMENT BEFORE MAKING USE OF THIS DOCUMENT.

This document is published by Truline Systems. The information contained within this publication is for general information purposes only. The publication has not been prepared to meet the individual requirements of any particular construction project and it is your responsibility to ensure that the construction materials, techniques and processes are suitable for that particular use.

The information contained within this publication is not intended to amount to, nor should it be relied upon as, formal advice or guidance (including from any qualified professional).

The information provided is only to be used and acted on by, or under the supervision of suitably qualified individuals and is correct at the time of going to press. However Truline Systems reserves the right to amend specifications without prior notification in accordance with our policy of continuous development.

The information in this publication is not to be used as a substitute for obtaining suitable independent, professional, qualified and/or specialist advice. If you are not a suitably qualified professional, you must obtain your own independent, specialist advice from a relevant qualified professional for any construction project.

Truline Systems shall not be liable for any loss of profit, revenue, business, contract, opportunity, goodwill, reputation, or any indirect, special or consequential loss arising out of, or in connection with, this publication.

If you have any queries, please contact technical@trulinesystems.co.uk